

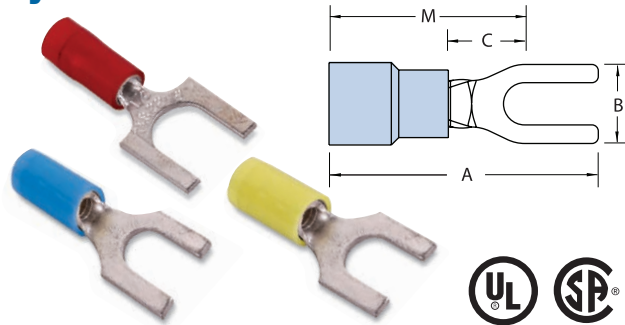
## Nylon-Insulated Fork Terminals

- Fork terminals enable easy installation because the mounting screw does not have to be completely removed
- Brazed seam barrel is serrated for high pull-out value. Terminal is high conductivity electrolytic copper, electro-tin plated. Insulation is color-coded
- Vinyl insulated fork terminals have extra-long PVC insulation sleeve for protection and stress relief at wire's flex point
- Suffix "X" indicates an expanded insulation support, meaning a wider wire entry to accommodate heavy wall insulation



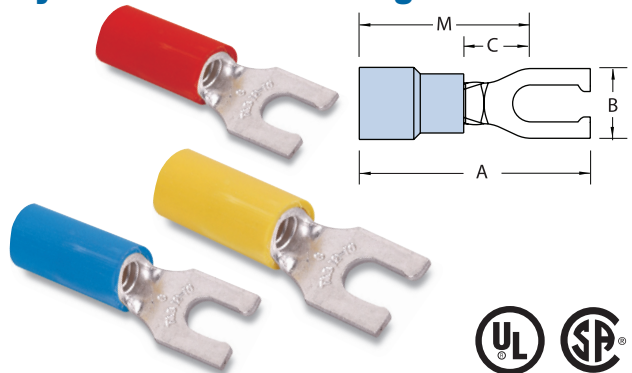
Sta-Kon Terminal Products and Tools

### Nylon-Insulated Fork



CAT. NO.	PKG. QTY.	WIRE RANGE	MAX. INS.	BOLT HOLE	REC. TOOL	DIMENSIONS				STOCK THICK.
						A	B	C	M	
RA18-6F	100	22-16	.136	#6	ERG 2001	.83	.25	.25	.71	.02
RA1103	1,000	22-16	.136	#6		.83	.25	.25	.71	
RA18-8F	100	22-16	.136	#8		.86	.31	.25	.71	
RA1123	1,000	22-16	.136	#8		.86	.31	.25	.71	
RA18-10F	100	22-16	.136	#10		.86	.31	.25	.71	
RA1153	1,000	22-16	.136	#10		.86	.31	.25	.71	
RA18-14F	100	22-16	.136	1/4"		.95	.44	.31	.70	
RA1163	1,000	22-16	.136	1/4"		.95	.44	.31	.70	
RB14-6F	100	18-14	.162	#6		.87	.31	.25	.71	.03
RB1113	1,000	18-14	.162	#6		.87	.31	.25	.71	
RB14-8F	100	18-14	.162	#8		.87	.31	.25	.71	
RB1123	1,000	18-14	.162	#8		.87	.31	.25	.71	
RB14-10F	100	18-14	.162	#10		.87	.38	.25	.71	
RB1153	1,000	18-14	.162	#10		.87	.38	.25	.71	
RB14-14F	100	18-14	.162	1/4"		.95	.44	.28	.74	
RB1163	1,000	18-14	.162	1/4"	.95	.44	.28	.74		
RB1103	1,000	18-14	.162	#6	.74	.28	.16	.60	.04	
RB1124	1,000	18-14	.190	#8	.95	.31	.25	.79		
RB1154	1,000	18-14	.190	#10	.95	.31	.25	.79		
RC10-6F	50	12-10	.210	#6	.97	.31	.27	.81		
RC1113	500	12-10	.210	#6	.97	.31	.27	.81		
RC10-8F	50	12-10	.210	#8	1.00	.37	.27	.81		
RC1123	500	12-10	.210	#8	1.00	.37	.27	.81		
RC10-10F	50	12-10	.210	#10	1.00	.37	.27	.81		
RC1153	500	12-10	.210	#10	1.00	.37	.27	.81		
RC10-14F	50	12-10	.210	1/4"	1.12	.50	.27	.86		
RC1163	500	12-10	.210	1/4"	1.12	.50	.27	.86		
RC1124	1,000	12-10	.250	#8	1.10	.37	.27	.91		
RC1154	1,000	12-10	.250	#10	1.10	.37	.27	.91		

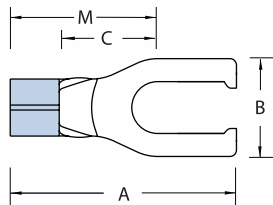
### Nylon-Insulated Locking Fork



CAT. NO.	PKG. QTY.	WIRE RANGE	MAX. INS.	BOLT HOLE	REC. TOOL	DIMENSIONS				STOCK THICK.
						A	B	C	M	
RA18-6FL	100	22-16	.136	#6	ERG 2001	.86	.25	.25	.71	.02
RA2213	1,000	22-16	.136	#6		.86	.25	.25	.71	
RA18-8FL	100	22-16	.136	#8		.86	.29	.25	.71	
RA2243	1,000	22-16	.136	#8		.86	.29	.25	.71	
RA18-10FL	100	22-16	.136	#10		.86	.29	.25	.71	
RA2253	1,000	22-16	.136	#10		.86	.29	.25	.71	
RB14-6FL	100	18-14	.162	#6		.87	.25	.25	.71	.03
RB2213	1,000	18-14	.162	#6		.87	.25	.25	.71	
RB2214	1,000	18-14	.190	#6		.95	.25	.25	.79	
RB14-8FL	100	18-14	.162	#8		.87	.29	.25	.71	
RB2233	1,000	18-14	.162	#8		.87	.29	.25	.71	
RB14-10FL	100	18-14	.162	#10		.87	.29	.25	.71	
RB2253	1,000	18-14	.162	#10		.87	.29	.25	.71	
RB2254	1,000	18-14	.190	#10		.95	.29	.25	.71	
RC10-6FL	50	12-10	.210	#6		.97	.31	.27	.81	
RC2203	500	12-10	.210	#6	.97	.31	.27	.81		
RC2204	1,000	12-10	.250	#6	1.07	.31	.27	.91		
RC10-8FL	50	12-10	.210	#8	1.00	.37	.27	.81		
RC2213	500	12-10	.210	#8	1.00	.37	.27	.81		
RC10-10FL	50	12-10	.210	#10	1.00	.37	.27	.81		
RC2223	500	12-10	.210	#10	1.00	.37	.27	.81		
RC2224	1,000	12-10	.250	#10	1.10	.37	.27	.91		
RC10-14FL	50	12-10	.210	1/4"	1.12	.50	.32	.86		
RC2233	500	12-10	.210	1/4"	1.12	.50	.32	.86		

## Locking Fork & Pin Terminals

### Non-Insulated Locking Fork Terminals

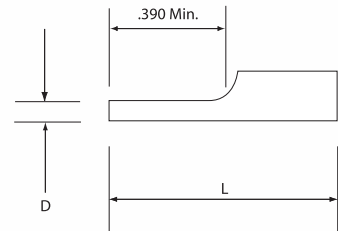


CAT. NO.	PKG. QTY.	WIRE RANGE	BOLT HOLE	REC. TOOL	DIMENSIONS				STOCK THICK.
					A	B	C	M	
A18-6FL	100	22-16	#6	ERG 2002	.75	.25	.27	.59	.02
A221	1,000	22-16	#6		.75	.25	.27	.59	
A18-8FL	100	22-16	#8		.75	.29	.27	.59	
A224	1,000	22-16	#8		.75	.29	.27	.59	
A18-10FL	100	22-16	#10		.75	.29	.27	.59	
A225	1,000	22-16	#10		.75	.29	.27	.59	.03
B14-6FL	100	18-14	#6		.75	.25	.27	.59	
B220	1,000	18-14	#6		.75	.25	.27	.59	
B14-8FL	100	18-14	#8		.75	.29	.27	.59	
B223	1,000	18-14	#8		.75	.29	.27	.59	
B14-10FL	100	18-14	#10	.75	.29	.27	.59	.04	
B225	1,000	18-14	#10	.75	.29	.27	.59		
C10-6FL	50	12-10	#6	.85	.31	.27	.66		
C220-TB	500	12-10	#6	.85	.31	.27	.66		
C10-8FL	50	12-10	#8	.85	.37	.27	.66		
C221	500	12-10	#8	.85	.37	.27	.66	.04	
C10-10FL	50	12-10	#10	.85	.37	.27	.66		
C222	500	12-10	#10	.85	.37	.27	.66		
C10-14FL	50	12-10	1/4"	.85	.49	.27	.66		

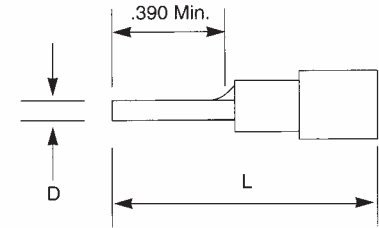
### Pin Terminals



Non-Insulated Pin Terminal



Insulated Pin Terminal



CAT. NO.	PKG. QTY.	WIRE RANGE	D (DIA.)	L	REC. TOOLS	STOCK THICK.	
<b>Non-Insulated</b>							
A47PT	1,000	22-18	.075	.63	ERG2002	.02	
B47PT	1,000	16-14	.075	.63		.03	
C55PT	500	12-10	.106	.76		.04	
<b>Vinyl</b>							
18RA-47PT	100	22-18	.075	.85	ERG2001	.02	
RA47PT	1,000	22-18	.075	.85			
14RB-47PT	100	16-14	.075	.87		.03	
RB47PT	1,000	16-14	.075	.87			
10RC-55PT	50	12-10	.106	1.04		.04	
RC55PT	500	12-10	.106	1.04			
<b>Nylon</b>							
RA18-47PT	100	22-18	.075	.85		.02	
RA147PT	1,000	22-18	.075	.85			
RB14-47PT	100	16-14	.075	.87		.03	
RB147PT	1,000	16-14	.075	.87			
RC10-55PT	50	12-10	.106	1.04	.04		
RC155PT	500	12-10	.106	1.04			